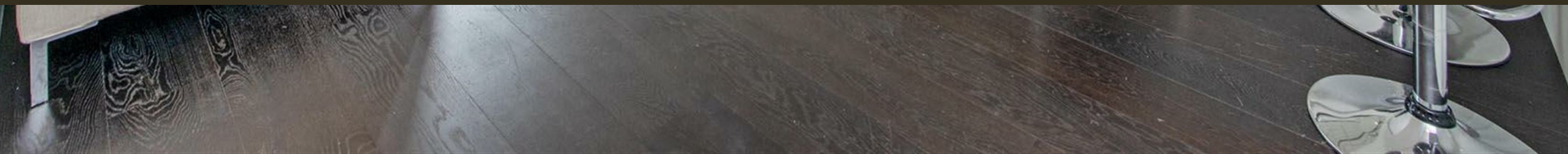




Moore House, 2 Gatliff Road
London SW1W

GARTON JONES.COM



Moore House, 2 Gatliff Road London, SW1W

£1,038 Per Week

GARTON JONES.COM

8 Gatliff Road
Grosvenor
Waterside
Chelsea
London
SW1W 8DP

Sales +44 (0) 20 7730 5007
gws@gartonjones.com
www.gartonjones.com

A TWO BEDROOM apartment to rent of approx. 871 sq.ft (80 sq.m) Moore House, one of the buildings forming part of the popular Grosvenor Waterside development in Chelsea. The apartment can be FURNISHED* OR UNFURNISHED and has an open plan reception room, a smart kitchen with Miele integrated appliances (including a wine cooler), wood flooring, comfort cooling, a modern bathroom and excellent storage (including a utility cupboard housing a dishwasher, washer/dryer and built-in wardrobes to the master bedroom). There is also an UNDERGROUND PARKING SPACE.

24 HOUR CONCIERGE, GYM & SPA. On-site Sainsbury's Local, coffee shop and private kids club. SLOANE SQUARE & VICTORIA station with Gatwick Express are within walking distance.

Available via Garton Jones on-site office at Grosvenor Waterside (underneath Bramah House).

*Please note furniture may differ to that shown in the current photos.

Westminster City Council (band F).

Video tour available on request.

12 month minimum term. 6 week deposit required.

EPC rating: B (84)

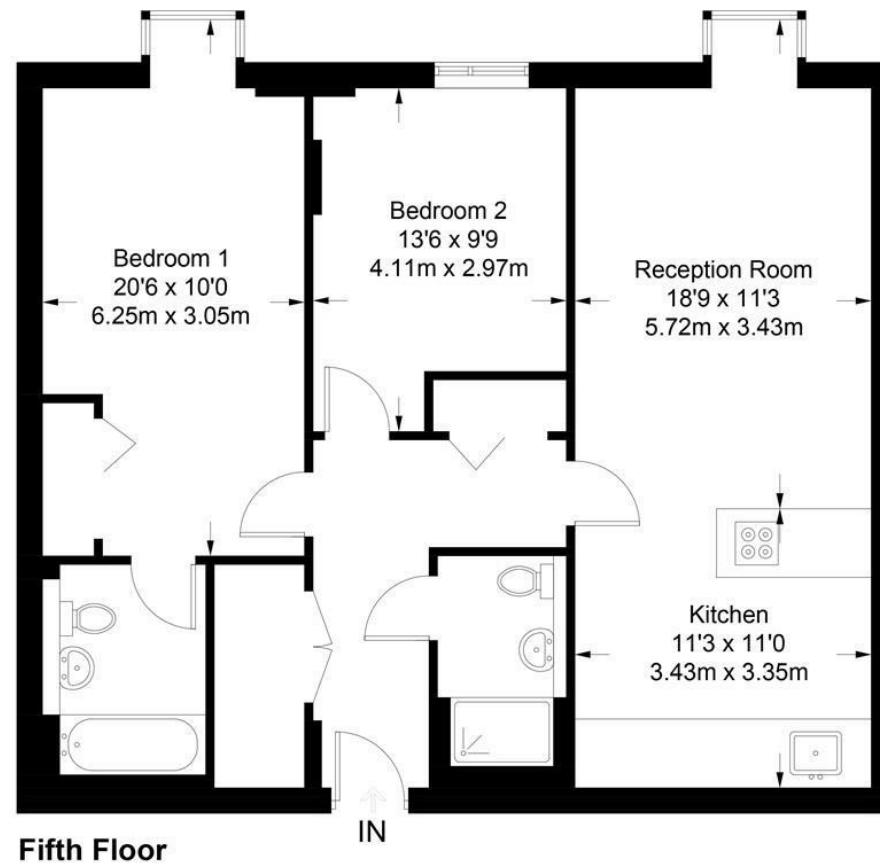
EPC certificate available on request.

- 871 Sq.ft (80.9 Sq.m)
- Two Double Bedrooms
- Open Plan Reception Room
- Integrated Kitchen
- Modern Bathrooms
- 24 Hour Concierge
- Secure Underground Parking
- Residents' Gym with Spa Facilities
- On-Site Sainsbury's, Coffee Shop & Bakery, Purple Dragon Private Kids Club & Crèche
- Walking Distance to Sloane Square & Victoria Station



Moore House

Approximate Gross Internal Area = 871 sq ft / 80.9 sq m



Not to scale, for guidance only and must not be relied upon as a statement of fact.
All measurements and areas are approximate only and have been prepared in accordance with the current edition of the RICS Code of Measuring Practice.

